



 everdime

Unleashing the Power of
Digital Innovation



The Everdime ecosystem is a cutting-edge platform that harnesses the power of AI and blockchain technology to revolutionize the technological landscape.

We provide a seamless and personalized user experience through AI-powered metahumans, enabling natural language processing, advanced data analytics, and secure communications.

With a strong team of AI experts and innovative technology, we are reshaping the future of digital interactions.

Problem

The current technological landscape lacks personalization, natural language understanding, and secure communication capabilities.

Users face challenges like limited contextual understanding, data privacy concerns, and fragmented experiences across different platforms.

These limitations hinder the potential of AI-powered integration for businesses entering the space

Solution



Everdime addresses these challenges by integrating AI and blockchain into its digital ecosystem.

Our platform utilizes AI algorithms to create lifelike metahumans with natural language processing capabilities, allowing users to interact with them seamlessly.

By leveraging blockchain technology, we ensure secure and encrypted messaging, confirmation of delivery, and receipt of messages.

Our voice and video communications, provide an immersive and secure communication experience.

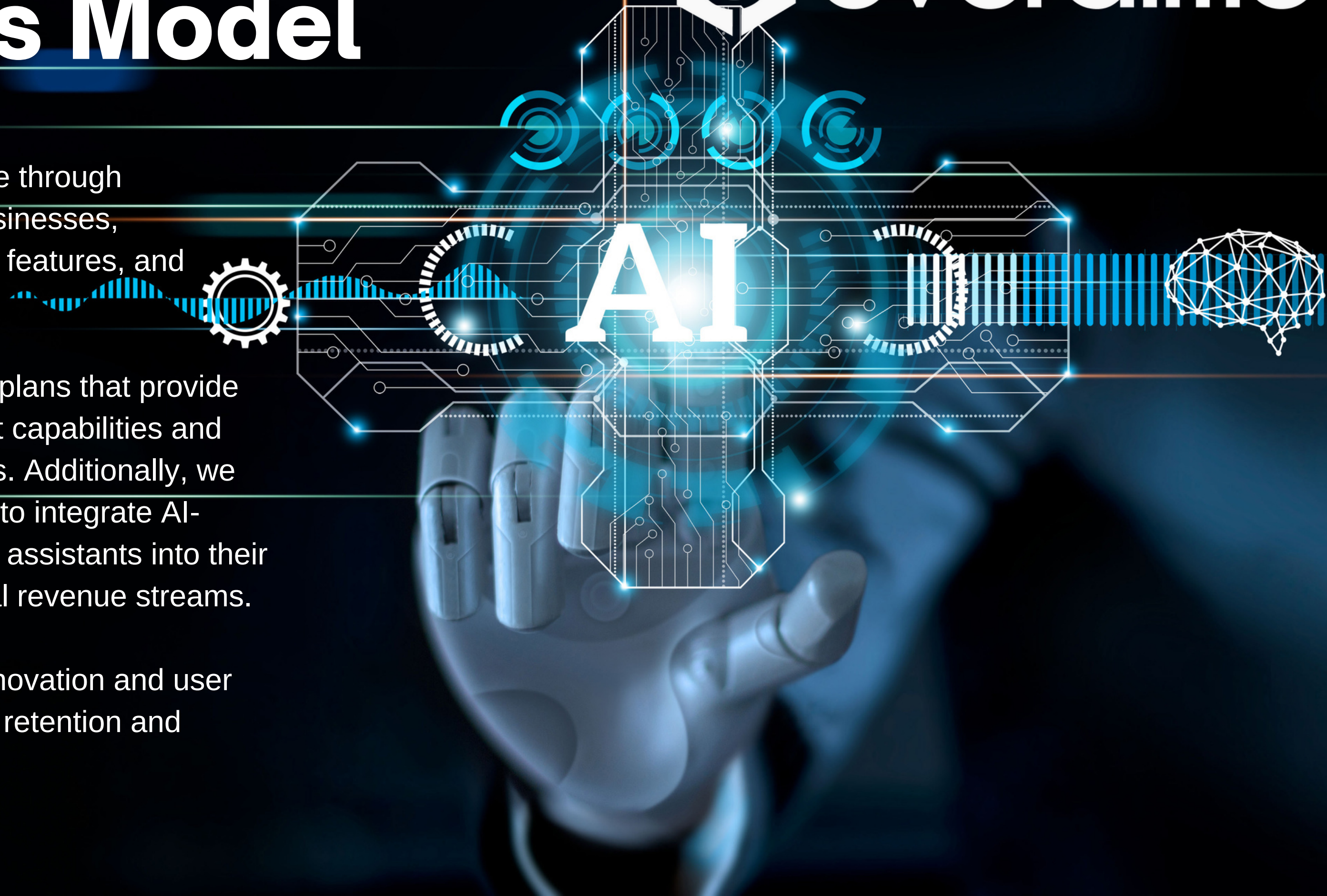
Business Model



Everdime generates revenue through onboarding legacy web2 businesses, subscription plans, premium features, and partnerships.

We offer tiered subscription plans that provide varying levels of AI assistant capabilities and access to advanced features. Additionally, we collaborate with businesses to integrate AI-powered chatbots and voice assistants into their platforms, creating additional revenue streams.

Our focus on continuous innovation and user satisfaction drives customer retention and revenue growth.



Market

The global AI market is projected to reach \$190 billion by 2025, with increasing adoption in various industries.

The demand for personalized, secure, and efficient digital interactions is growing exponentially



AI

Everdime is well-positioned to capitalize on this market opportunity by providing advanced AI-powered digital assistant solutions that redefine how people communicate and interact with technology.



Customer Acquisition

Everdime's target customers include businesses and organizations seeking advanced AI-powered digital assistant solutions.

We employ a multi-channel marketing approach, including digital advertising, strategic partnerships, and direct outreach to engage with our target audience.

Our platform's intuitive user interface, natural language understanding, and secure communication features ensure a seamless onboarding experience and drive customer satisfaction.



Competition

While there are existing players in the AI and digital assistant market, Everdime differentiates itself through its AI-powered metahumans, secure blockchain-based messaging, and advanced data analytics capabilities.

Our platform provides a comprehensive and personalized user experience, delivering tailored recommendations, intelligent insights, and secure communication channels.

By leveraging our cutting-edge AI technologies, we stand out in the market and offer a unique value proposition.



Team

The Everdime team comprises AI experts, blockchain developers, and technology enthusiasts.

Our team members possess deep expertise in machine learning, natural language processing, and blockchain technology.

With a proven track record of innovation and leadership, our team is dedicated to pushing the boundaries of AI-powered digital assistants and delivering transformative experiences to our users.



[About us](#) 

Ask

We are seeking an early-stage investment to accelerate the growth and development of Everdime's AI-powered digital assistant ecosystem.

The funding will be utilized for AI research and development, platform scalability, user acquisition, and strategic partnerships.

With this investment, we aim to achieve significant milestones, including expanding our AI capabilities, enhancing our metahuman technology, scaling our user base, and forging strategic partnerships with key industry players.

We are confident that this investment will fuel our growth and establish Everdime as an AI-powered digital technology market leader.



AI-POWERED METAHUMAN ASSISTANTS

- Lifelike digital assistants with human-like voices, characteristics, and mannerisms.
- Capable of interacting with customers, providing personalized assistance, and answering queries.
- Enhance customer engagement and satisfaction within the Everdime ecosystem.



BLOCKCHAIN-BASED DIGITAL WALLET



- Secure platform for storing, sending, and receiving digital assets.
- Facilitates seamless and secure transactions within the Everdime ecosystem.
- Enables confirmation of message delivery and receipt, including voice and video communications.



DECENTRALIZED REAL ESTATE OFFERING

- Revolutionizes the traditional real estate market through NFT-based digital ownership asset proofs.
- Provides a secure and transparent platform for buying, selling, and owning real estate assets.
- Incorporates features such as profile setup, property listing management, analytics, and automated advertising.





SHOWHOMES HUB

- Centralized platform for real estate professionals to effectively market themselves and their listings.
- Offers tools and functionalities to amplify the exposure and attract potential buyers.
- Includes features like house image uploading, dedicated property websites, analytics, and reporting.



AI-LLM DATA COLLECTION AND TRAINING

- Include proprietary specific business and product data sets to train AI assistants.
- Indexes and engineers data to optimize AI training and performance.
- Enable AI assistants to handle tasks, engage with customers, and provide insights.



KEY ACHIEVEMENTS

- Develop and launch AI-powered Metahuman Assistants, receiving positive feedback from users for their lifelike interactions and personalized assistance.
- The Blockchain-based Digital Wallet was successfully implemented, providing a secure and efficient platform for storing and transacting digital assets within the Everdime ecosystem.
- Establish partnerships with leading real estate agencies and professionals, gaining traction and adoption for the Decentralized Real Estate Offering.
- Launch the ShowHomes Hub, attracting a growing number of real estate professionals and enthusiasts to market their listings and engage with potential buyers effectively.

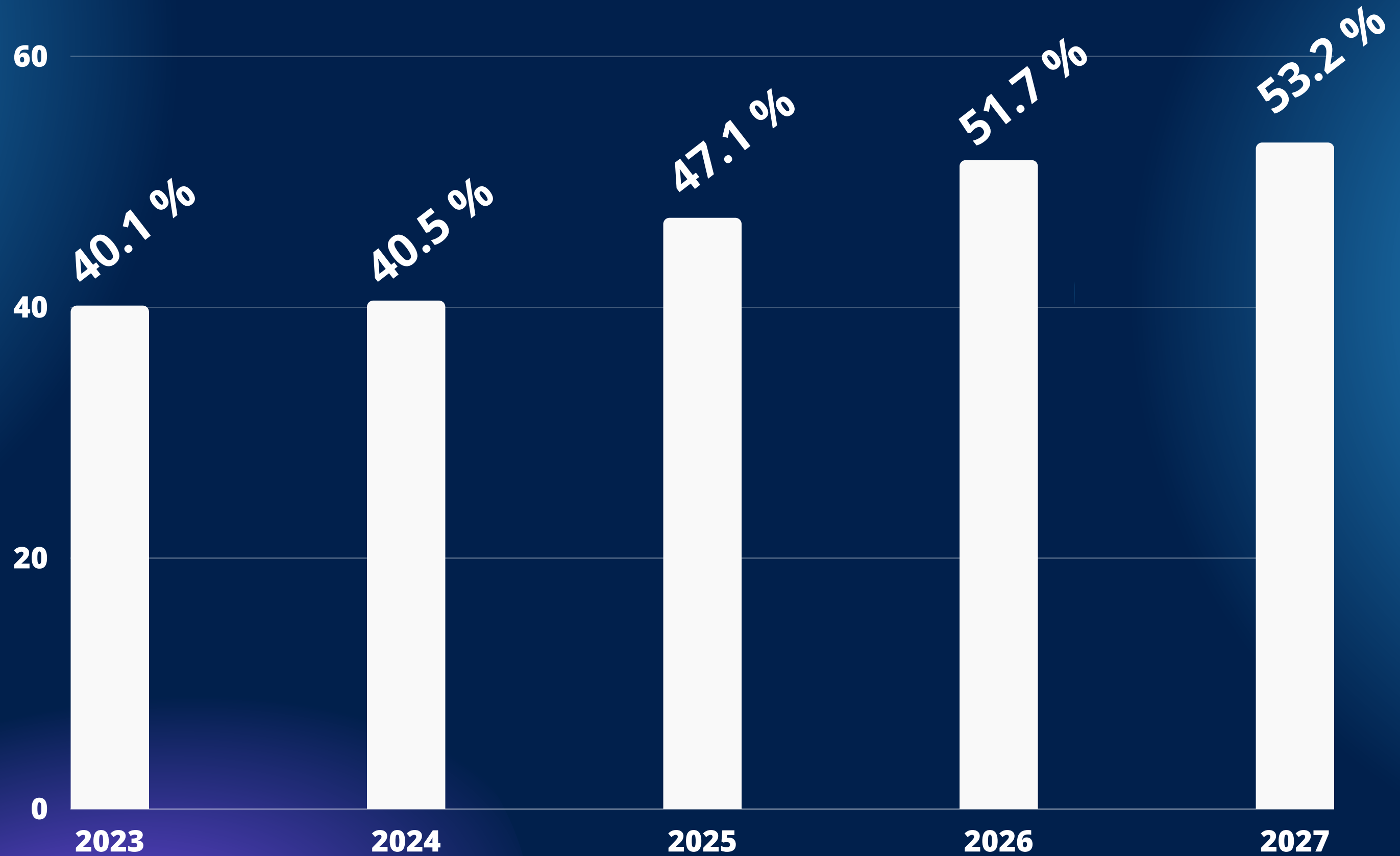


MILESTONES

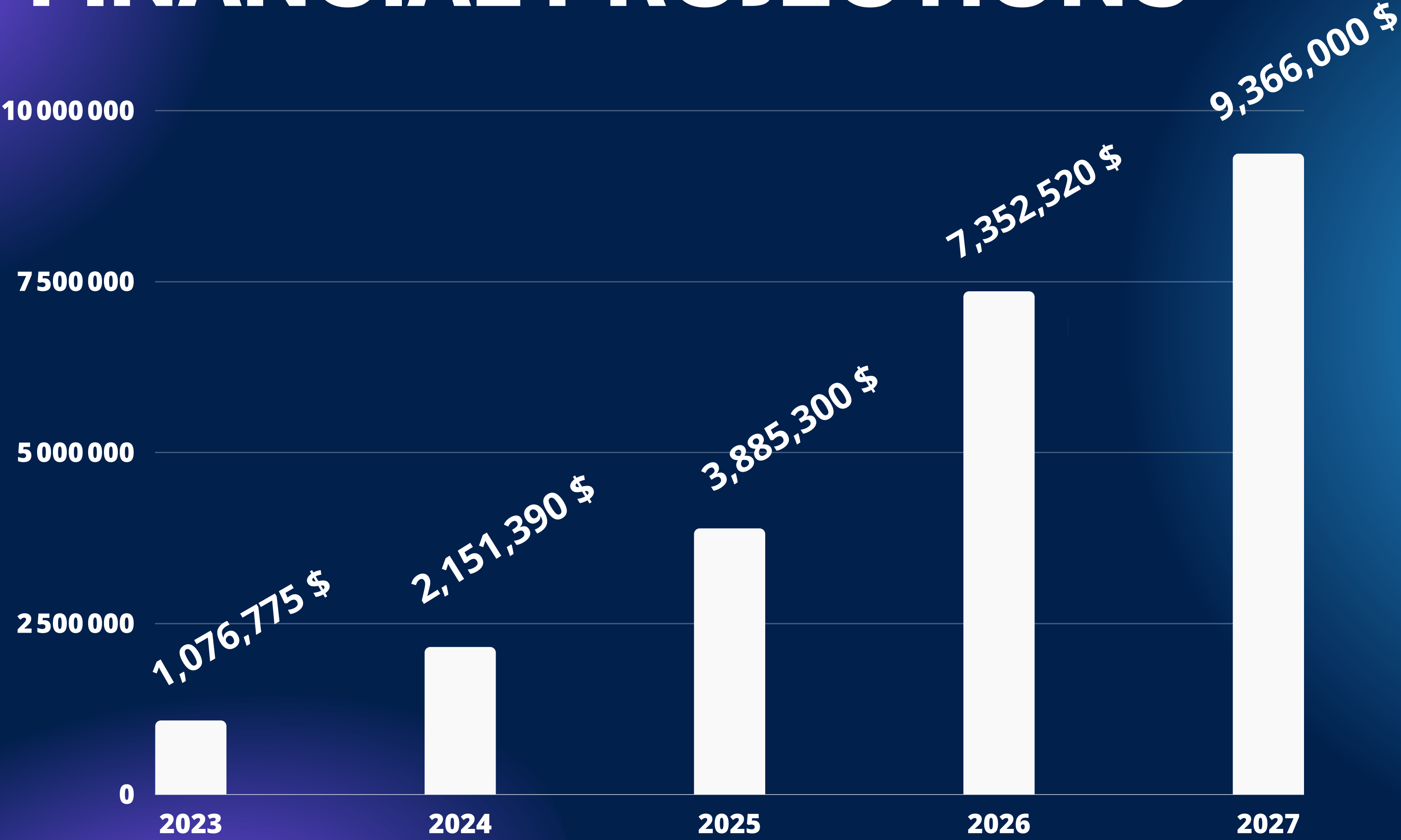
- Complete the development of the AI-LLM training infrastructure, enabling efficient data collection and training of AI assistants.
- Expand the Decentralized Real Estate Offering to international markets, establishing partnerships with key real estate players in target regions.
- Achieve profitability with positive revenue streams from the Digital Wallet, AI-LLM data services, and real estate transactions.
- Introduce AI-powered voice and video communications within the Blockchain-based Digital Wallet, enhancing user experience and engagement.



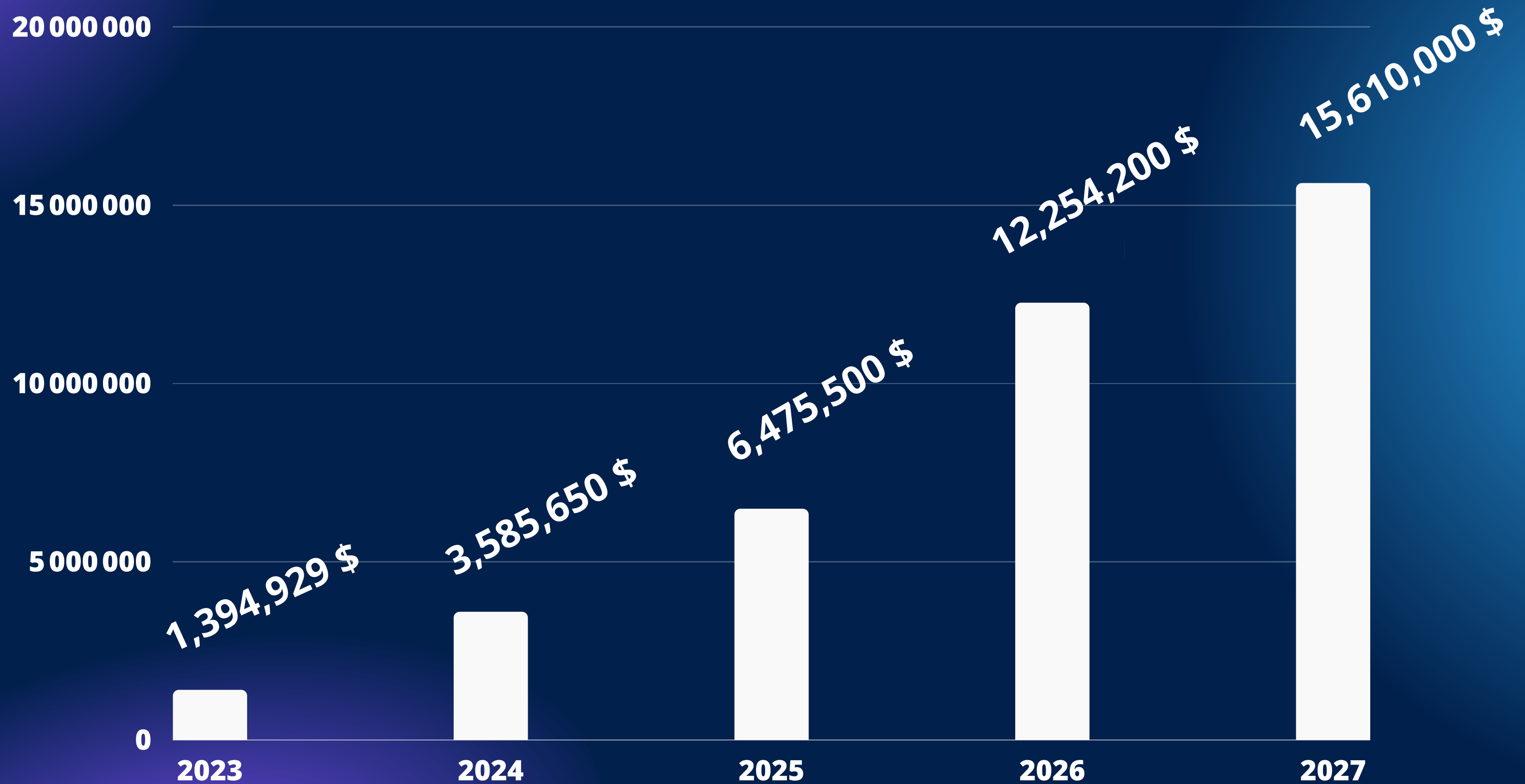
PROFITABILITY ANALYSIS



FINANCIAL PROJECTIONS



REVENUE FORECAST



CONTACT



LINKEDIN

[Sandor Miklos](#)



MAIL

smiklos@everdime.com



WEBSITE

<https://everdime.com/>

Sandor Miklos is the visionary CEO of Everdime, who stands at the forefront of the company's success. With a diverse background and exceptional achievements, Sandor's expertise in finance and technology drives Everdime's mission to revolutionize the digital landscape.

Sandor's educational foundation in economics and computer sciences and his prestigious CIMA designation from the Wharton School of Business equips him with a comprehensive understanding of both financial and technological aspects.

His experience includes influential positions as a partner and VP at renowned investment firms such as ScotiaMcLeod and Refco, where he managed portfolios for high-net-worth individuals and institutions, including the Ontario Secondary School Teachers Federation (OSSTF).



By leveraging our AI expertise, innovative technology, and strong market potential, we are confident in the growth and success of Everdime's AI-powered digital assistant ecosystem. We invite you to join us on this exciting journey and be a part of revolutionizing the way people interact with technology.



Thank You!